

FT-330 LED

3-functional LED lamp

FUNCTIONS lamp:

- rear position light
- STOP light
- indicator

Power consumption:

- rear position light:
12V/24V = 0.02A/0.02A
- STOP light: 12V/24V = 0.08A/0.08A
- indicator:
12V/24V = 0.06A/0.06A

Power consumption / Rated power:

- rear position light:
12V/24V = 0.25W/0.5W
- STOP light: 12V/24V = 1W/2W
- indicator:
12V/24V = 0.8W/1.5W

FT-331 LED

2-functional LED lamp

FUNCTIONS lamp:

- front position light
- indicator (kat.1)

Power consumption:

- front position light:
12V/24V = 0.02A/0.02A
- indicator:
12V/24V = 0.15A/0.15A

Power consumption / Rated power:

- front position light:
12V/24V = 0.25W/0.5W
- indicator:
12V/24V = 1.8W/3.6W

FT-332 LED

1-functional LED lamp

FUNCTIONS lamp:

- fog light

Power consumption:

- swifog light
12V/24V = 0.2A/0.1A

Power consumption / Rated power:

- fog light:
12V/24V = 2.5W/2.5W

FT-333 LED

1-functional LED lamp

FUNCTIONS lamp:

- reversing light

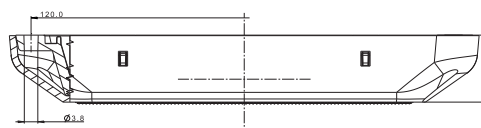
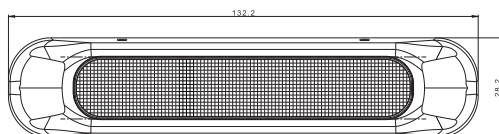
Power consumption:

- reversing light:
12V/24V = 0.2A/0.1A

Power consumption / Rated power:

- reversing light:
12V/24V = 2.5W/2.5W

Vertical / horizontal approval



FT-330 LED	Universal LED rear lamp 12V/24V, 3-functional STOP / POSITIONAL / INDICATOR, 1 m cable.
FT-331 LED	Universal LED front lamp 12V/24V, 2-functional POSITIONAL / INDICATOR, 1 m cable.
FT-332 LED	Universal LED rear lamp 12V/24V, 1-functional FOG, 1 m cable.
FT-333 LED	Universal LED rear lamp 12V/24V, 1-functional REVERSE, 1 m cable.

FT-334 LED

1-functional LED lamp

FUNCTIONS lamp:

- rear position light

Power consumption:

- rear position light:
12V/24V = 0.02A/0.02A

Power consumption / Rated power:

- rear position light:
12V/24V = 0.25W/0.5W

FT-335 LED

1-functional LED lamp

FUNCTIONS lamp:

- STOP light

Power consumption:

- STOP light: 12V/24V = 0.1A/0.1A

Power consumption / Rated power:

- STOP light: 12V/24V = 1.2W/2.4W

FT-336 LED

1-functional LED lamp

FUNCTIONS lamp:

- rear position light
- STOP light

Power consumption:

- rear position light:
12V/24V = 0.02A/0.02A
- STOP light: 12V/24V = 0.1A/0.1A

Power consumption / Rated power:

- rear position light:
12V/24V = 0.25W/0.5W
- STOP light: 12V/24V = 1.2W/2.4W

FT-337 LED

1-functional LED lamp

FUNCTIONS lamp:

- indicator
- rear direction indicator lamp, category 2a
- front direction indicator lamp, category 1

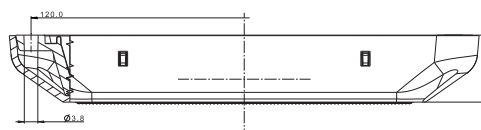
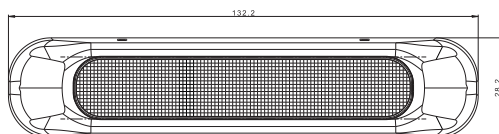
Power consumption:

- indicator:
12V/24V = 0.125A/0.1A

Power consumption / Rated power:

- indicator:
12V/24V = 1.5W/2.5W

Vertical / horizontal approval



FT-334 LED	Universal LED rear lamp 12V/24V, 1-functional POSITIONAL, 1 m cable.
FT-335 LED	Universal LED rear lamp 12V/24V, 1-functional STOP, 1 m cable.
FT-336 LED	Universal LED rear lamp 12V/24V, 2-functional STOP / POSITIONAL, 1 m cable.
FT-337 LED	Universal LED lamp 12V/24V, 1-functional INDICATOR, 1 m cable.